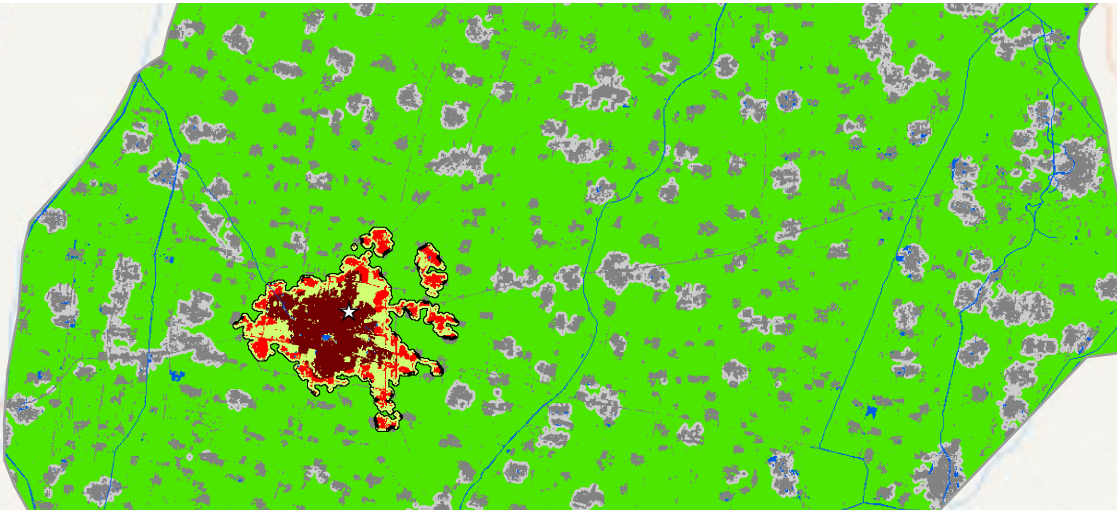


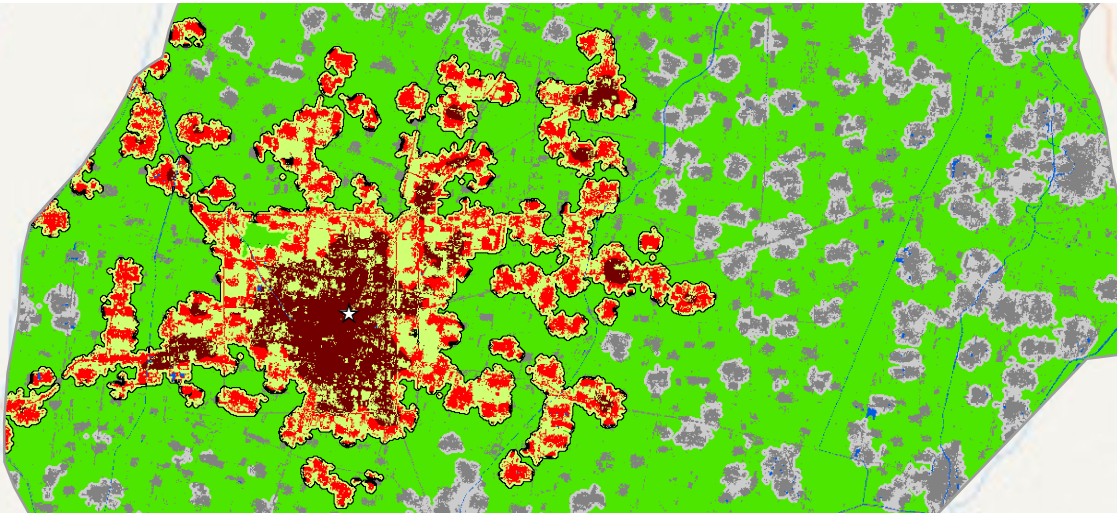
Sep-1990



Sep-2000










Apr-2014



Yanggu, Shandong, China 1990-2014



- | | |
|--|--|
|  Study area |  Rural open space |
|  Urban extent |  Exurban built-up area |
|  Urban built-up area |  Exurban open space |
|  Suburban built-up area |  Water |
|  Rural built-up area |  No data |
|  Urbanized open space |  CBD |